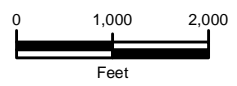


 Project Boundary



Source(s): USGS Topographic Survey, St. Marys, FL. Quadrangle (1994); USGS The National Map

Disclaimer: The information depicted on this figure is for conceptual purposes only, serves to aid a licensed engineer or geologist in rendering professional services, and is subject to review and approval by appropriate regulatory agencies.

USGS The National Map: National Boundaries Dataset, National Elevation Dataset, Geographic Names Information System, National Hydrography Dataset, National Land Cover Database, National Structures Dataset, and National Transportation Dataset; U.S. Census Bureau - TIGER/Line; HERE Road Data



**ENVIRONMENTAL SERVICES, INC.**  
7220 Financial Way, Suite 100  
Jacksonville, Florida 32256  
(904) 470-2200  
(904) 470-2112 Fax  
[www.environmentalservicesinc.com](http://www.environmentalservicesinc.com)

Project Location

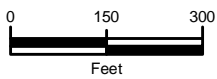
## Tradeplex/Nassau County Public Works Maintenance Facility

Nassau County, Florida

Project:	EJ15300.00
Date:	Jan. 2017
Drawn By:	AVL
Checked By:	JRN
Approved By:	AWP
Figure:	1



- Project Boundary
- 26 - CENTENARY FINE SAND, 0 TO 5 PERCENT SLOPES
- 39 - EVERGREEN-LEON MUCKS, DEPRESSIONAL
- 6 - HURRICANE-POTTSBURG FINE SANDS, 0 TO 5 PERCENT SLOPES
- 9 - LEON FINE SAND
- 20 - ORTEGA FINE SAND, 0 TO 5 PERCENT SLOPES
- 27 - RIDGEWOOD FINE SAND, 0 TO 5 PERCENT SLOPES



Source(s): USDA Soils Survey of Nassau County, FL; ESRI World Imagery Basemap

Disclaimer: The information depicted on this figure is for conceptual purposes only, serves to aid a licensed engineer or geologist in rendering professional services, and is subject to review and approval by appropriate regulatory agencies.

DigitalGlobe, GeoEye, Earthstar Geographics, CNES/Airbus S, AeroGRID, IGN, and the GIS User Community



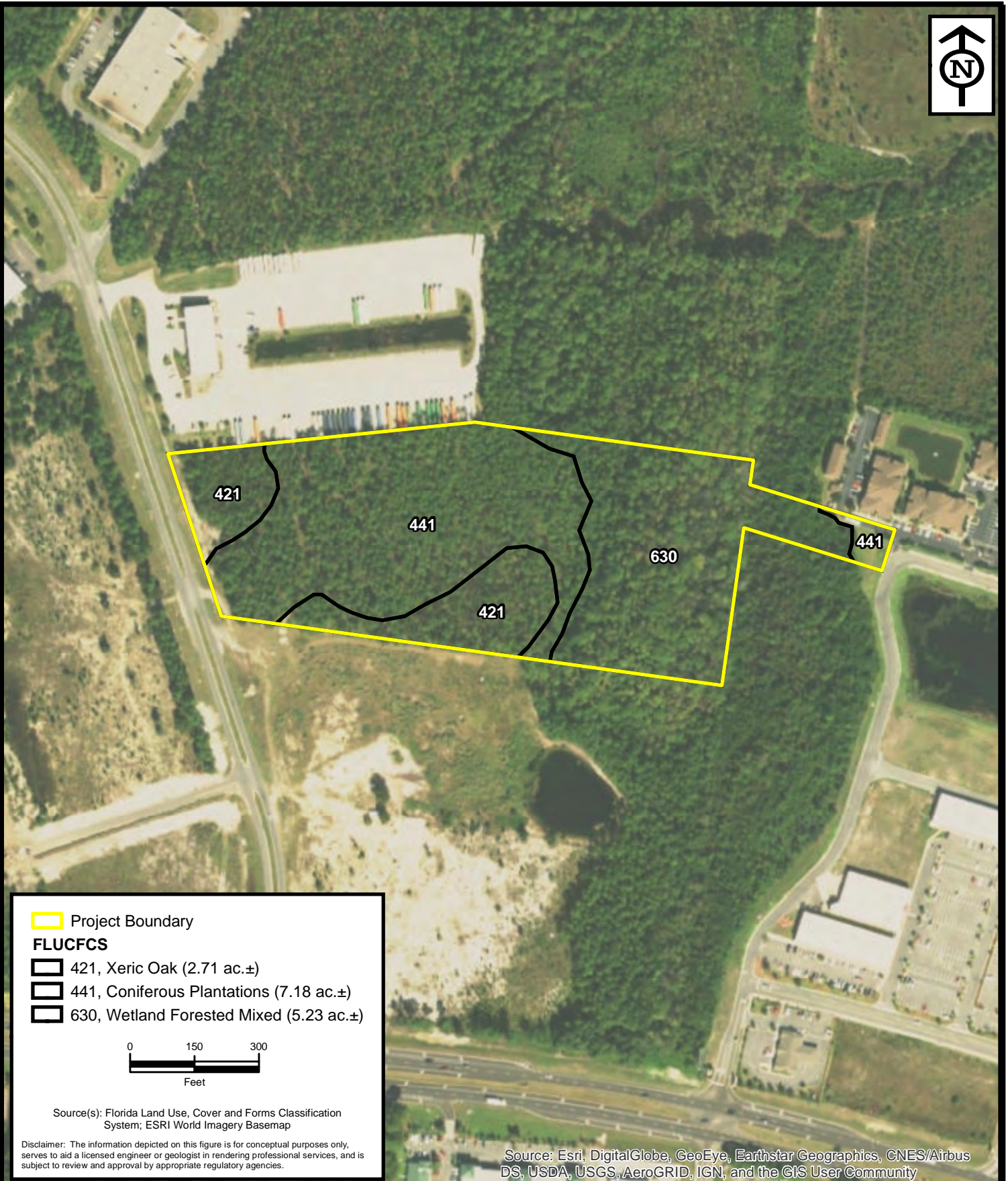
**ENVIRONMENTAL SERVICES, INC.**  
 7220 Financial Way, Suite 100  
 Jacksonville, Florida 32256  
 (904) 470-2200  
 (904) 470-2112 Fax  
[www.environmentalservicesinc.com](http://www.environmentalservicesinc.com)

NRCS Soils

## Tradeplex/Nassau County Public Works Maintenance Facility

Nassau County, Florida

Project:	EJ15300.00
Date:	Jan. 2017
Drawn By:	AVL
Checked By:	JRN
Approved By:	AWP
Figure:	2



Project Boundary

**FLUCFCS**

421, Xeric Oak (2.71 ac.±)

441, Coniferous Plantations (7.18 ac.±)

630, Wetland Forested Mixed (5.23 ac.±)

0      150      300  
  
 Feet

Source(s): Florida Land Use, Cover and Forms Classification System; ESRI World Imagery Basemap

Disclaimer: The information depicted on this figure is for conceptual purposes only, serves to aid a licensed engineer or geologist in rendering professional services, and is subject to review and approval by appropriate regulatory agencies.

Source: Esri, DigitalGlobe, GeoEye, Earthstar Geographics, CNES/Airbus DS, USDA, USGS, AeroGRID, IGN, and the GIS User Community

**ENVIRONMENTAL SERVICES, INC.**  
 7220 Financial Way, Suite 100  
 Jacksonville, Florida 32256  
 (904) 470-2200  
 (904) 470-2112 Fax  
[www.environmentalservicesinc.com](http://www.environmentalservicesinc.com)

Existing Site Conditions

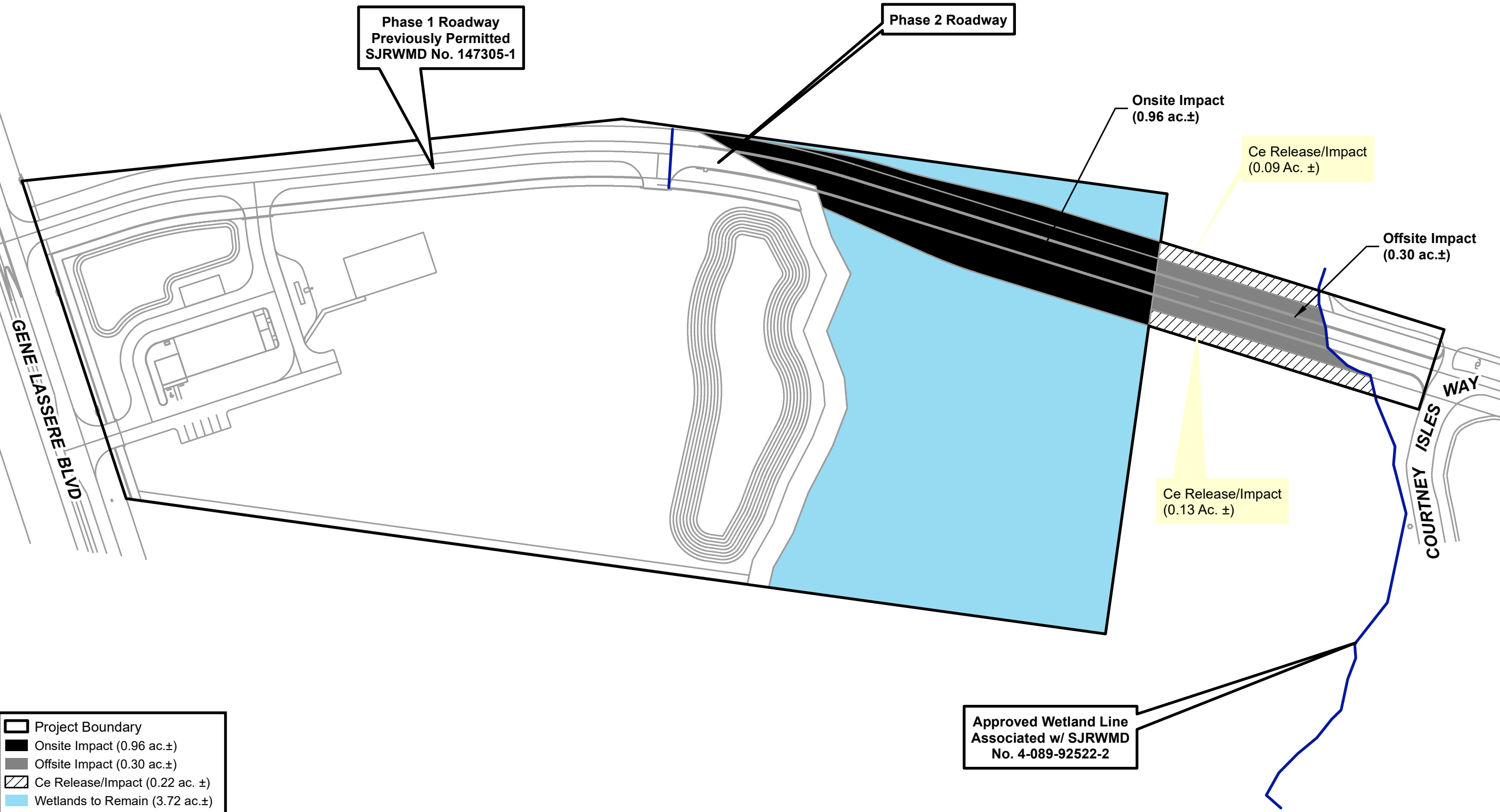
## Tradeplex/Nassau County Public Works Maintenance Facility

Nassau County, Florida

Project:	EJ15300.00
Date:	Jan. 2017
Drawn By:	SMS
Checked By:	JRN
Approved By:	AWP
Figure:	2



Project:	EJ15300.00
Date:	Jan. 2017
Drawn by:	AA
Checked by:	RJN
Approved by:	AP
Figure:	4



**Legend**

- Project Boundary
- Onsite Impact (0.96 ac.±)
- Offsite Impact (0.30 ac.±)
- Ce Release/Impact (0.22 ac. ±)
- Wetlands to Remain (3.72 ac.±)
- Wetland Line

0 60 120  
Feet

Source(s):

Disclaimer: The information depicted on this figure is for conceptual purposes only, serves to aid a licensed engineer or geologist in rendering professional services, and is subject to review and approval by appropriate regulatory agencies.

Proposed Site Conditions

## Tradeplex/Nassau County Public Works Maintenance Facility

Nassau County, Florida

**ENVIRONMENTAL SERVICES, INC.**

7220 Financial Way, Suite 100  
Jacksonville, Florida 32256  
(904) 470-2200  
©1996 ESI (904) 470-2112 Fax  
[www.environmentalservicesinc.com](http://www.environmentalservicesinc.com)